

Makita[®]

355mm (14") Cut Off Saw

M2401G



Product Objectives

- Designed to suit the needs of metal fabricators, engineers and steel fixers
- Develop a high performance portable cut off saws that feature a powerful 2,000W motor.
- The M2401G will replace the M2400G



Product Overview



Product Specification Sheet



- **Powerful 2,000W motor** – powerful motor enables the user to power through cuts quickly and efficiently
- **Shaft lock** – easy installation and removal of abrasive discs with single wrench by pressing the shaft lock
- **Quick release vise** – various sizes of material can be clamped quickly without winding the clamp in and out each time
- **Transport handle** – housing designed with handle for easy transportation to and from the jobsite
- **Adjustable guide plate** – guide plate provides three angle settings up to 45 degrees left and right with stops at 15 and 30 degrees

Max. cutting capacities at 90°	102x194mm
Max. cutting capacities at 45° mitre	115x103
Wheel diameter	355mm (14")
Hole diameter	25.4mm
No load speed	3,800rpm
Continuous rating input	2,000W
Overall length	500mm
Net weight	13.7kg
Power supply cord	2.0m

Advantages

Performance



Heavy duty 2,000W motor

Safety



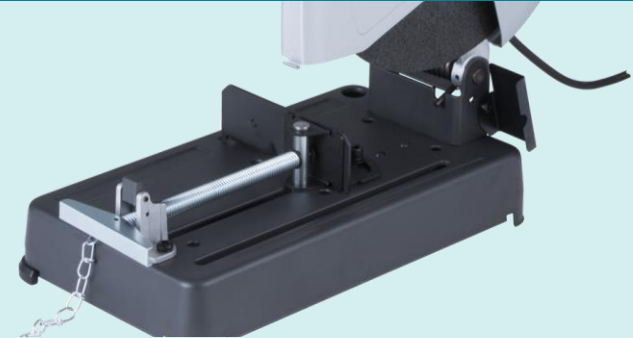
Safety lock button ensures motor cannot accidentally be started

Convenience





Saw head locking chain and carry handle ensure easy transportation

Efficiency










Quick release vise
Solid stock retention and quick release

Product Replacement

	M2401G - NEW	M2400G
		
Max. cutting capacities at 90°	102x194mm	102x194mm
Max. cutting capacities at 45° mitre	115x103	115x103
Wheel diameter	355mm (14")	355mm (14")
Hole diameter	25.4mm	25.4mm
No load speed	3,800rpm	3,800rpm
Continuous rating input	2,000W	2,000W
Overall length	500mm	500mm
Net weight	13.7kg	16.7kg
Power supply cord	2.0m	2.0m

Accessories

Standard Accessories		
	783023-0	Hex wrench 8
	A-89545	14" Cutting wheel

Optional Accessories		
	A-89551-5 A-89551-25	Metal Cut Off Wheel 355mm x 3 x 25.4 (A36P-BF) (5PK) 355mm x 3 x 25.4 (A36P-BF) (25PK)
	B-27078-5 B-27078-25	Metal Cut Off Wheel – Fast Cut 355mm x 2.4 x 25.4 (A30Q-BF) (5PK) 355mm x 2.4 x 25.4 (A30Q-BF) (25PK)
	B-27084-5 B-27084-25	Metal Cut Off Wheel – Long Life 355mm x 3 x 25.4 (A30Q-BF) (5PK) 355mm x 3 x 25.4 (A30Q-BF) (25PK)
	B-27090-5 B-27090-25	Metal Cut Off Wheel – Double Reinforced 355mm x 3 x 25.4 (A30R-BF) (5PK) 355mm x 3 x 25.4 (A30R-BF) (25PK)
	B-29511 D-41414	Vacuum Brazed Diamond Metal Body Cut Off Wheel Performance 355mm x 25.4 (1PK) Standard 355mm 25.4 (1PK)